

Boston
Scientific



Quick Start Guide

Charging System

Vercise Gevia™

VERCISE™
Deep Brain Stimulation System



Charging your Vercise Gevia™ system is a piece of cake

*The Vercise Gevia™
Deep Brain Stimulation
system comes with up
to 25 years battery life.*

An overview

Charger

Indicator Light

Power

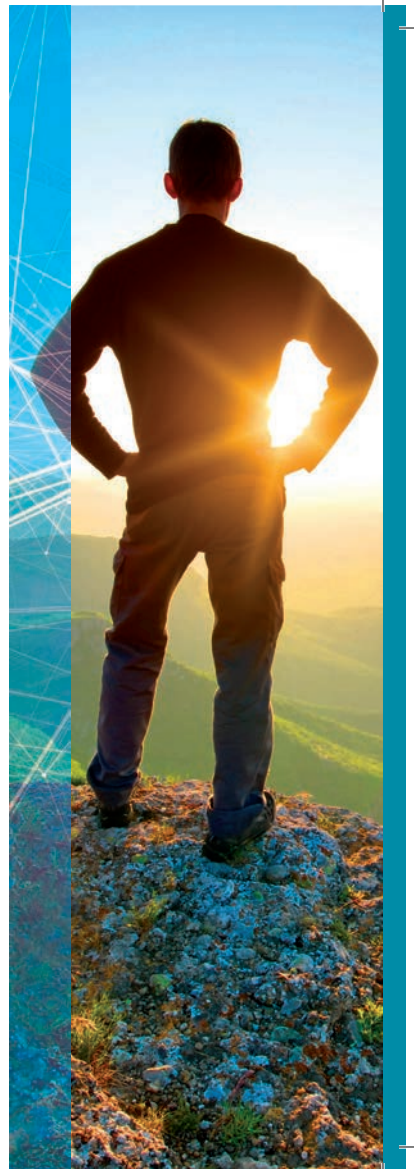


+



Charging your device is as easy as 1-2-3!

- The charging system is **simple and easy to use.**
- The charging collar is **completely cordless**, so you can **enjoy full mobility** while charging your device.
- **You can decide** when and where you charge your device.



*All you need to charge
your Vercise Gevia™ stimulator is:*



A **power
supply**



The **base
station**



The **charger**



The **charging
collar** and
**accompany-
ing counter-
weight**

The image is a composite. The left half shows a hiker from behind, wearing an orange jacket and a backpack, walking on a dirt path through a green valley towards a large, rocky mountain peak under a cloudy sky. The right half is a blue overlay with a white network diagram consisting of many dots connected by lines, resembling a constellation or a data network. The text 'Charge your stimulator in 3 easy steps' is written in white on the blue background.

**Charge your
stimulator in
3 easy steps**

1. Charge your charger

- Plug the base station into a power outlet and place the charger in the base station. A **yellow light** will appear on the charger. This means the **charging is in process**.



- Please note that as long as the **yellow light** shows, the charger is only **partially charged**. This means it can still be used to charge your DBS stimulator but it may not be possible to recharge the stimulator fully.



-
- When a **green light** shows, the charger is **fully charged**. This means it is ready to charge your DBS stimulator.



-
- If the indicator light is **not showing** while the charger is in the base station, there may be a **loose connection**. Check that the charger is securely placed in the base station.



2. Place the charger within your charging collar

- Once sufficiently charged, remove the charger from the base station. Before you place your charger in your charging collar, make sure to **switch your charger on**, using the circular **power button** in the middle of the charger.
- The **green indicator light** will show and the charger will **beep in a steady continuous rhythm**. Once the charger is correctly aligned with your stimulator, the **beeping will stop**.



-
- Place the **charger** into the pouch of your charger collar and place the **counterweight** in the opposite pouch.
 - Place the charging collar around your neck. Make sure the **mesh pockets of the collar are facing outwards**.



3. Position the collar to align the charger with your stimulator



- Move the collar slightly up and down and from side to side until it is **resting over your stimulator**. If you need to, you can change the collar length to the right size for you using the **Velcro adjusters**. When correctly positioned the **continuous single beeps** will stop.
- Check the charger occasionally to ensure it's **centered over your stimulator**. If not centered properly, charging times may vary.
- You know the stimulator is fully charged when you hear a **double beep for a total of 60 seconds** and see that the **green indicator light** has switched off. Although you don't have to charge your stimulator to 100% it can be helpful to know that your battery is fully charged, especially before attending a programming clinic.

Tip: *Once your stimulator is charged, return your charger to the base station. This ensures it will be fully charged for the next time you need it. Then you're all set!*

Making charging work for you

Top Tips

- **Choose a charging schedule that works for you:** You can decide whether to have shorter, more frequent charging sessions or longer, less frequent charging sessions. Pick a routine that best fits into your daily lifestyle and don't forget that you can easily charge while watching your favorite TV program or reading the morning paper. A standard charging session once a week generally takes **30–60 minutes**.



- **Check your battery status via your Vercise Gevia™ remote:** As long as your charger isn't currently charging your stimulator, your Vercise Gevia™ **remote will show your stimulator's battery status**. Whenever this is low, your stimulator should be charged as soon as possible.
- **Keep your base station plugged in** so it is **always ready to charge** your charger when needed.



This document is not intended as a substitute for the provided Vercise™ and/or Vercise Gevia™ Deep Brain Stimulation (DBS) System Patient Manual. The contents of the handbook must be carefully read and fully understood before using your Vercise™ Charging System. If you have any questions, or need clarification of anything contained in this manual, please [contact your physician](#).



All cited trademarks are the property of their respective owners. CAUTION: The law restricts these devices to sale by or on the order of a physician. Indications, contraindications, warnings and instructions for use can be found in the product labelling supplied with each device. Information for the use only in countries with applicable health authority product registrations. Material not intended for use in France. Information contained herein is for distribution outside the U.S. only. Illustrations for information purposes – not indicative of actual size or clinical outcome.

NM-519703-AA

www.bostonscientific.eu

© 2018 Boston Scientific Corporation
or its affiliates. All rights reserved.
DINN0131EA